

TSB-Comms-Troubleshooting

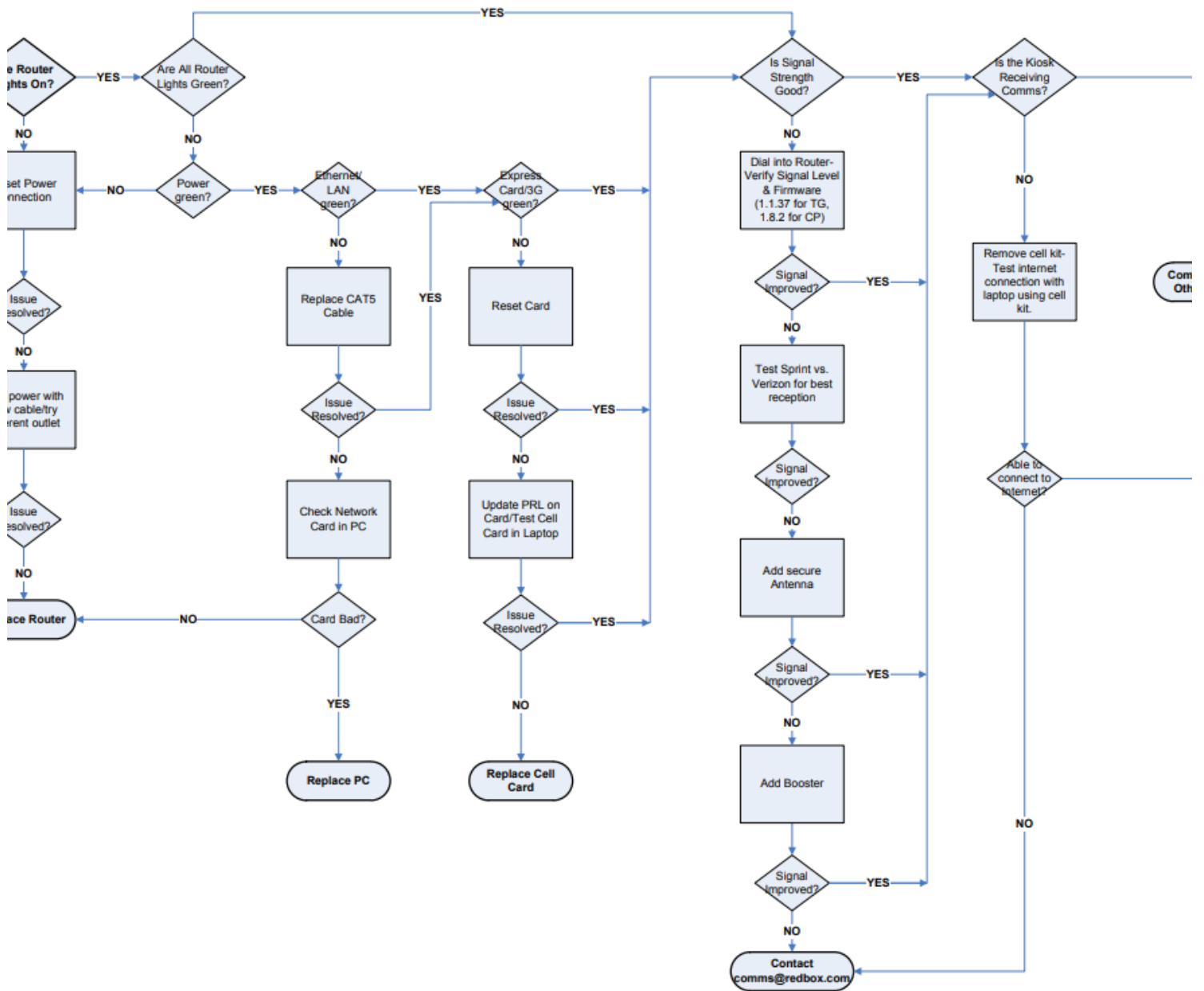
Alex Schweitzer
Best Practice Engineer

Before Starting:

- Check all connections (cell card to antenna, router to PC, router to power).
- Check that the cell card is firmly inserted.
- Check antenna cord/connections for damage.
- Power cycle router.
- Check that the kiosk has power.
- Verify the IP Address on Kiosk.

Reference TSBs for Technical Instructions

Common Drive:\TSBs



Report Out-of-Date Content

